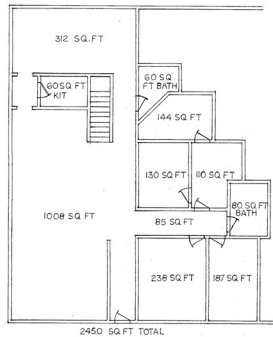


# Duluth Office

1829 E. Superior St.  
Duluth, MN 55805



## Professional Office/Retail Space For Lease \$14+/sq. ft.

- 2,450 Sq. Ft.
- Great office/professional space
- Nicely built out and ready to move in with few modifications
- Front row on street parking with private parking behind building
- Good visibility on one of Duluth's primary arterial road
- Affordable rates and signage opportunities

